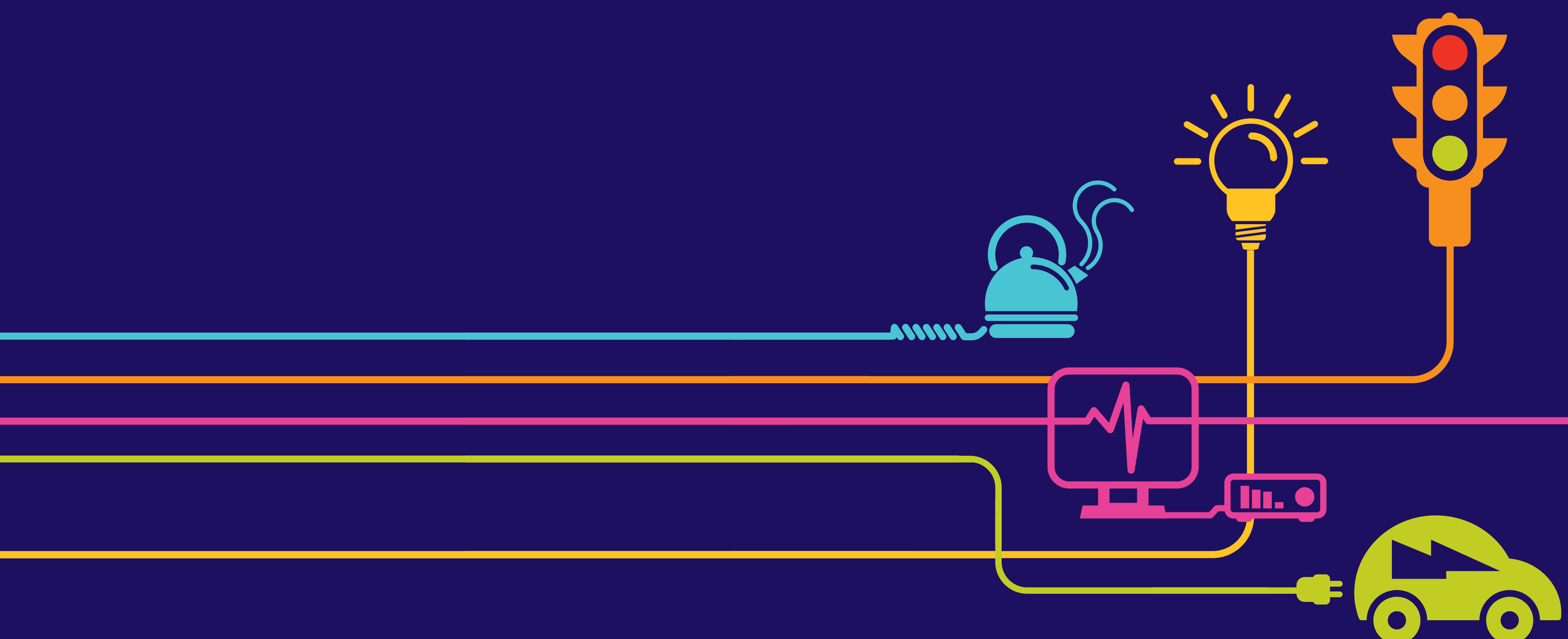


New Verified Photomontages Part 1

Hinkley Point C Connection Project

*Regulation 5(2)(a) of the Infrastructure Planning
(Applications: Prescribed Forms and Procedure)
Regulations 2009*



Hinkley Point C Connection Project

Volume 8.7.3 – New Photomontages (orange highlight indicates the contents of this Volume)

Figure	Title
Volume 8.7.3.1	
8.7.3.1 - 8.7.3.11	Additional Verified Photomontage Viewpoint locations (replaces previously submitted Volume 8.2.25, Appendix 9.24c.1.2)
Volume 8.7.3.2	
8.7.3.12	VPE12 during operation
8.7.3.13	VPG13 during operation
8.7.3.14	VPG14 during operation
8.7.3.15	VPD28 during operation
8.7.3.16	VPD29 during operation
8.7.3.17	VPD30 during operation
Volume 8.7.3.3	
8.7.3.18	VPC17 during operation
8.7.3.19	VPB30 during operation
8.7.3.20	VPB31 during operation
8.7.3.21	VPB32 during operation
8.7.3.22	VPA10 during operation
Volume 8.7.3.4	
8.7.3.23	VPG10 during operation
8.7.3.24	VPG11 during operation
Volume 8.7.3.5	
8.7.3.25	VPD31 during operation and after 15 years
8.7.3.26	VPD33 during operation and after 15 years
8.7.3.27	VPF9 preferred route Option A and alternative route Option B during operation
8.7.3.28	VPD32 during operation
Volume 8.7.3.6	
8.7.3.29	VPF8 during operation
8.7.3.30	VPF10 during operation
8.7.3.31	VPF11 during operation
8.7.3.32	VPF12 during operation
Volume 8.7.3.7	
8.7.3.33	VPG12 during operation



Existing view

Existing view from highway verge adjacent to A369 Martcombe Road and PRoW LA15/5/10 east of Portbury, looking west towards Grade I listed Church of St Mary, Portbury (asset ID LB129), Portbury settlement and the W Route on Tickenham Ridge (Section E)



Anticipated view of preferred route (Option A) during operation

Anticipated view of the 400kV overhead line supported by T-pylons and steel lattice pylons, visible above trees adjacent to the M5 motorway and beyond Grade I listed Church of St Mary, Portbury (asset ID LB129) and barely perceptible on Tickenham Ridge during operation (with the W Route on Tickenham Ridge removed and tree removal not distinguishable)

Viewing Information

This is a composite image made up of 4 No. 50mm photographs joined together horizontally to form an overall field of view which is wider than that seen in detail by the human eye.

For correct perspective viewing, this image must be viewed at an exact distance of 300mm with one eye whilst curving the image in an exact arc of 100 degrees. This image should only be assessed in the real landscape from the same viewpoint.

When not in the real landscape in order to provide an accurate representation images should be viewed with one eye by panning across a flat image with the eye remaining at the recommended viewing distance of 300mm from the image.

This document relates to paragraph 5(2)(q) of the Infrastructure Planning (Applications: prescribed forms and procedure) Regulations 2009

Light Detection and Ranging (LIDAR) level data typically at 40 points per/m2 and also data at 1m and 2m intervals was used for topographical information.

T-pylon

- Frame - light grey composite material, circular shape
- Insulator - light blue/grey composite material
- Twin conductor bundle

Steel lattice pylon

- Frame - grey steel material
- Insulator - light blue/grey composite material
- Twin conductor bundle

Date of photograph: 25/02/2015 Lens type:50mm (digital full frame camera)					
Distance to the nearest proposed T-pylon: 673.3m OS reference of viewpoint: X= 350675.633 Y= 175457.472					
Direction of view: 275.8 ^o (west) Viewpoint height: 18.513m AOD					
Horizontal field of view: 100 ^o Viewing distance approx 300mm at A1					
A	19/03/2015	FRWG	AJG	LG	NH
ISSUE	DATE	COMMENTS	DRAW	CHKD	APPD
Title NATIONAL GRID (HINKLEY POINT C CONNECTION PROJECT) VOLUME 8.7.3 VERIFIED PHOTOMONTAGE VIEWPOINT VPE12					
NG INVESTMENT No.	APPLICATION No.				IN
20897	EN020001				A1
FIGURE No.	DRAWING No.				SCALE
8.7.3.12	IN1979.82.025.001B				NTS
SHEET 1 OF 1					ISSUE
					A



Existing view
Existing view from A369 at M5 Junction 19 northeast of Portbury, looking southwest towards Grade I listed Church of St Mary, Portbury (asset ID LB129) and along the M5 towards Portbury settlement and the W Route on Tickenham Ridge (Section G)



Anticipated view of preferred route (Option A) during operation
Anticipated view of the 400kV overhead line supported by T-pylons, visible above trees adjacent to the M5 motorway and on Tickenham Ridge beyond Grade I listed Church of St Mary, Portbury (asset ID LB129) during operation (with the W Route on Tickenham Ridge removed and tree removal not distinguishable)

Viewing Information

This is a composite image made up of 5 No. 50mm photographs joined together horizontally to form an overall field of view which is wider than that seen in detail by the human eye.

For correct perspective viewing, this image must be viewed at an exact distance of 300mm with one eye whilst curving the image in an exact arc of 120 degrees. This image should only be assessed in the real landscape from the same viewpoint.

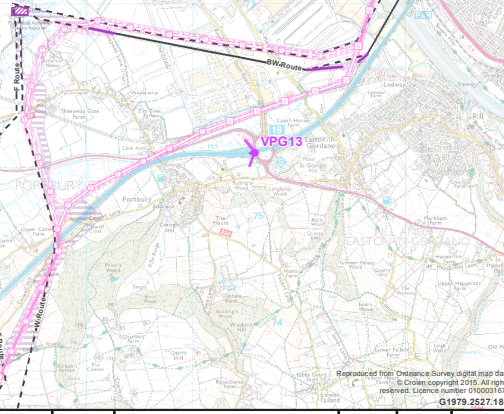

When not in the real landscape in order to provide an accurate representation images should be viewed with one eye by panning across a flat image with the eye remaining at the recommended viewing distance of 300mm from the image.

'This document relates to paragraph 5(2)(q) of the Infrastructure Planning (Applications: prescribed forms and procedure) Regulations 2009'

Light Detection and Ranging (LIDAR) level data typically at 40 points per/m2 and also data at 1m and 2m intervals was used for topographical information.

T-pylon

- Frame - light grey composite material, circular shape
- Insulator - light blue/grey composite material
- Twin conductor bundle

Date of photograph: 25/02/2015 Lens type:50mm (digital full frame camera)					
Distance to the nearest proposed T-pylon: 528.1m OS reference of viewpoint: X= 350583.388 Y= 175601.488					
Direction of view: 260.4 ^o (west) Viewpoint height: 16.997m AOD					
Horizontal field of view: 120 ^o Viewing distance approx 300mm at A1					
					
A	19/03/2015	FRWG	AJG	LG	NH
ISSUE	DATE	COMMENTS	DRAW	CHKD	APPD
Title NATIONAL GRID (HINKLEY POINT C CONNECTION PROJECT) VOLUME 8.7.3 VERIFIED PHOTOMONTAGE VIEWPOINT VPG13					
 <small>National Grid plc, Waterloo Technology Park, Garswood Rd, Worsley, C20 8DA</small>					
NG INVESTMENT No.		APPLICATION No.		IN	
20897		EN020001		A1	
FIGURE No.		DRAWING No.		SCALE	
8.7.3.13		IN1979.82.025.001B		NTS	
SHEET 1 OF 1					ISSUE
					A



Existing view

Existing view from PRoW LA15/21/20 (part of National Cycle Route 26) north of Portbury, looking south towards Grade I listed Church of St Mary, Portbury (asset ID LB129) and Portbury settlement. The Church of St Mary is not visible due to tree screening, but its position is highlighted for reference (Section G) Due to limited views from the north that would include St Mary's Church and the Proposed Development, VPG13 is provided in addition to the view from the north requested in ExA Q 8.16(a). The alternative viewpoint was agreed in consultation with the Joint Councils and HBMCE (formerly English Heritage)



Anticipated view of preferred route (Option A) during operation

Anticipated view of the 400kV overhead line supported by T-pylons, with Grade I listed Church of St Mary, Portbury (asset ID LB129) not visible due to tree screening during operation (tree removal not distinguishable)

Viewing Information

This is a composite image made up of 5 No. 50mm photographs joined together horizontally to form an overall field of view which is wider than that seen in detail by the human eye.

For correct perspective viewing, this image must be viewed at an exact distance of 300mm with one eye whilst curving the image in an exact arc of 120 degrees. This image should only be assessed in the real landscape from the same viewpoint.

When not in the real landscape in order to provide an accurate representation images should be viewed with one eye by panning across a flat image with the eye remaining at the recommended viewing distance of 300mm from the image.

'This document relates to paragraph 5(2)(a) of the Infrastructure Planning (Applications: prescribed forms and procedure) Regulations 2009'

Light Detection and Ranging (LIDAR) level data typically at 40 points per/m2 and also data at 1m and 2m intervals was used for topographical information.

T-pylon

- Frame - light grey composite material, circular shape
- Insulator - light blue/grey composite material
- Twin conductor bundle

Date of photograph: 25/02/2015 Lens type:50mm (digital full frame camera)					
Distance to the nearest proposed T-pylon: 196.7m OS reference of viewpoint: X= 350251.129 Y= 175901.620					
Direction of view: 189.4 ^o (south) Viewpoint height: 7.602m AOD					
Horizontal field of view: 120 ^o Viewing distance approx 300mm at A1					
A	19/03/2015	FRWG	AJG	LG	NH
ISSUE	DATE	COMMENTS	DRAW	CHKD	APPD
Title NATIONAL GRID (HINKLEY POINT C CONNECTION PROJECT) VOLUME 8.7.3 VERIFIED PHOTOMONTAGE VIEWPOINT VPG14					
NSG INVESTMENT No.	APPLICATION No.				IN
20897	EN020001				A1
FIGURE No.	DRAWING No.				SCALE
8.7.3.14	IN1979.82.025.001B				NTS
SHEET 1 OF 1					ISSUE
					A



Existing view

Existing view south of PRoW LA16/21/10 near Middle Yeo, looking west towards the Grade I listed Church of St Quiricus and St Julietta (asset ID LB85) with Grade II* listed Tickenham Court (asset ID LB350) partially visible behind Tickenham Court House which is not listed, and southwest towards the F Route and W Route across Nailsea Moor (Section D)



Anticipated view during operation

Anticipated view of the 400kV overhead line supported by T-pylons during operation (with the F Route, W Route and two trees removed)

Viewing Information

This is a composite image made up of 5 No. 50mm photographs joined together horizontally to form an overall field of view which is wider than that seen in detail by the human eye.

For correct perspective viewing, this image must be viewed at an exact distance of 300mm with one eye whilst curving the image in an exact arc of 120 degrees. This image should only be assessed in the real landscape from the same viewpoint.

When not in the real landscape in order to provide an accurate representation images should be viewed with one eye by panning across a flat image with the eye remaining at the recommended viewing distance of 300mm from the image.

'This document relates to paragraph 5(2)(q) of the Infrastructure Planning (Applications: prescribed forms and procedure) Regulations 2009'

Light Detection and Ranging (LIDAR) level data typically at 40 points per/m2 and also data at 1m and 2m intervals was used for topographical information.

T-pylon

- Frame - light grey composite material, circular shape
- Insulator - light blue/grey composite material
- Twin conductor bundle

Date of photograph: 24/02/2015 Lens type:50mm (digital full frame camera)					
Distance to the nearest proposed T-tylon: 306.3m OS reference of viewpoint: X= 346076.952 Y= 171500.445					
Direction of view: 220.5 ^o (south west) Viewpoint height: 7.525m AOD					
Horizontal field of view: 120 ^o Viewing distance approx 300mm at A1					
A	19/03/2015	FRWG	AJS	LG	NH
ISSUE	DATE	COMMENTS	DRAW	CHKD	APPD
Title NATIONAL GRID (HINKLEY POINT C CONNECTION PROJECT) VOLUME 8.7.3 VERIFIED PHOTOMONTAGE VIEWPOINT VPD28					
NG INVESTMENT No.		APPLICATION No.		IN	
20897		EN020001		A1	
FIGURE No.		DRAWING No.		SCALE	
8.7.3.15		IN1979.82.025.001B		NTS	
SHEET 1 OF 1					ISSUE
					A



Existing view
Existing view from PRoW LA16/23/10 northwest of the Causeway near Middle Yeo, looking southeast towards Grade II* listed Tickenham Court (asset ID LB350), Grade I listed Church of St Quiricus and St Julietta (asset ID LB85) and Nailsea with the F Route and W Route visible across Nailsea Moor and on Tickenham Ridge (Section D)



Anticipated view during operation
Anticipated view of the 400kV overhead line supported by T-pylons across Nailsea Moor and on Tickenham Ridge during operation (with the F Route, W Route, two groups of trees and three trees removed)

Viewing Information

This is a composite image made up of 6 No. 50mm photographs joined together horizontally to form an overall field of view which is wider than that seen in detail by the human eye.

For correct perspective viewing, this image must be viewed at an exact distance of 300mm with one eye whilst curving the image in an exact arc of 140 degrees. This image should only be assessed in the real landscape from the same viewpoint.

When not in the real landscape in order to provide an accurate representation

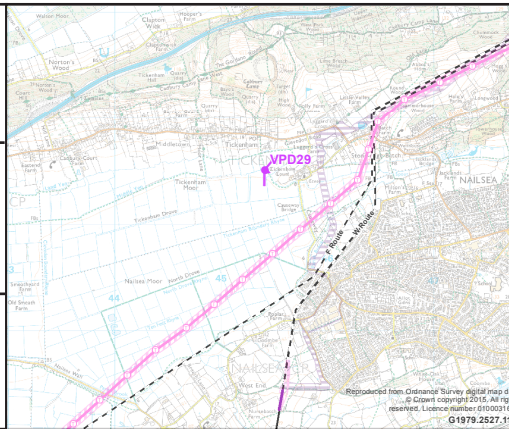

images should be viewed with one eye by panning accross a flat image with the eye remaining at the recommended viewing distance of 300mm from the image.

'This document relates to paragraph 5(2)(q) of the Infrastructure Planning (Applications: prescribed forms and procedure) Regulations 2009'

Light Detection and Ranging (LIDAR) level data typically at 40 points per/ m2 and also data at 1m and 2m intervals was used for topographical information.

T-pylon

- Frame - light grey composite material, circular shape
- Insulator - light blue/grey composite material
- Twin conductor bundle

Date of photograph: 24/02/2015 Lens type:50mm (digital full frame camera)				Title NATIONAL GRID (HINKLEY POINT C CONNECTION PROJECT) VOLUME 8.7.3	
Distance to the nearest proposed T-pylon: 654.4m OS reference of viewpoint: X= 345405.497 Y= 171514.466				VERIFIED PHOTOMONTAGE VIEWPOINT VPD29	
Direction of view: 110.5° (south east) Viewpoint height: 8.32m AOD				 <small>National Grid plc, Worsley Technology Centre, Worsley, Manchester, Greater Manchester, M20 9BA</small>	
Horizontal field of view: 140° Viewing distance approx 300mm at A1		NG INVESTMENT No. 20897		APPLICATION No. EN020001	IN A1
		FIGURE No. 8.7.3.16		DRAWING No. IN1979.82.025.001B	SCALE NTS
		SHEET 1 OF 1		ISSUE A	
A	19/02/2014	FRWD	AJG	LQ	NH
ISSUE	DATE	COMMENTS	DRAW	CHKD	APPD



Existing view

Existing view from PRoW AX24/8/10 adjacent to Puxton Lane, looking northeast towards Grade I listed Church of St Saviour (asset ID LB66), Puxton with the F Route visible in the distance above trees across Puxton Moor (Section D)



Anticipated view during operation

Anticipated view of the 400kV overhead line supported by T-pylons visible above trees across Puxton Moor during operation (with the F Route removed)

Viewing Information

This is a composite image made up of 5 No. 50mm photographs joined together horizontally to form an overall field of view which is wider than that seen in detail by the human eye.

For correct perspective viewing, this image must be viewed at an exact distance of 300mm with one eye whilst curving the image in an exact arc of 120 degrees. This image should only be assessed in the real landscape from the same viewpoint.


When not in the real landscape in order to provide an accurate representation images should be viewed with one eye by panning across a flat image with the eye remaining at the recommended viewing distance of 300mm from the image.

'This document relates to paragraph 5(2)(a) of the Infrastructure Planning (Applications: prescribed forms and procedure) Regulations 2009'

Light Detection and Ranging (LIDAR) level data typically at 40 points per/m2 and also data at 1m and 2m intervals was used for topographical information.

T-pylon

- Frame - light grey composite material, circular shape
- Insulator - light blue/grey composite material
- Twin conductor bundle

Date of photograph: 24/02/2015 Lens type:50mm (digital full frame camera)					
Distance to the nearest proposed T-pylon: 1188.5m OS reference of viewpoint: X= 340696.058 Y= 163106.343					
Direction of view: 24.6 ⁰ (north east) Viewpoint height: 6.566m AOD					
Horizontal field of view: 120 ⁰ Viewing distance approx 300mm at A1					
A	19/03/2016	FRWG	AJS	LG	NH
ISSUE	DATE	COMMENTS	DRAW	CHKD	APPD
Title NATIONAL GRID (HINKLEY POINT C CONNECTION PROJECT) VOLUME 8.7.3 VERIFIED PHOTOMONTAGE VIEWPOINT VPD30					
 <small>National Grid plc, Warwick Technology Park, Garsington Rd, Warwick, CV39 6DA</small>					
NG INVESTMENT No.		APPLICATION No.		IN	
20897		EN020001		A1	
FIGURE No.		DRAWING No.		SCALE	
8.7.3.17		IN1979.82.025.001B		NTS	
SHEET 1 OF 1				ISSUE	
				A	